



Getting started

Smartbox

Smartbox

For support, video tutorials, webinars and further information visit us at www.thinksmartbox.com

Welcome to



Grid 3 gives you the power to communicate, learn and control your world.

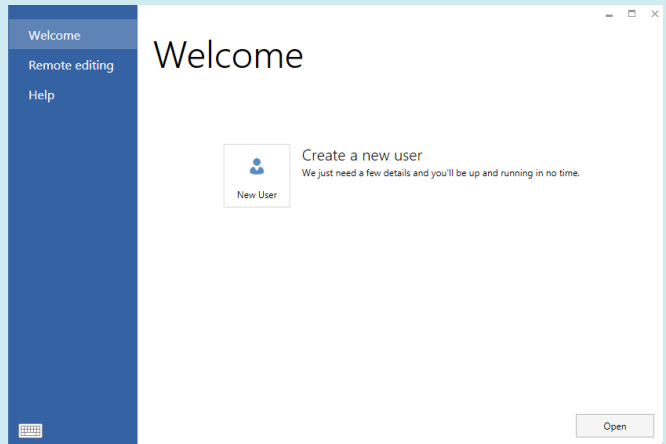
This booklet will help you get started with setting up Grid 3 and start communicating with grids straight away. Once you are up and running, don't forget to check the Grid 3 training cards and video tutorials which will help you learn how to use the software.



Creating a user

Creating a new user is the first thing you will do in Grid 3. Once you have made your user you can begin to customise their settings, grid sets, access methods, speech and much more.

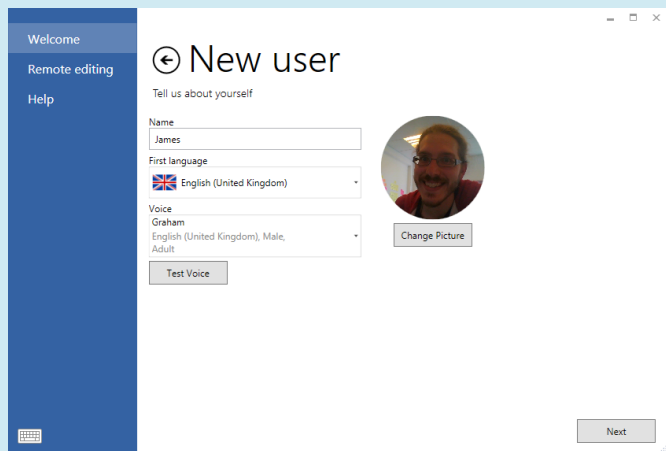
You will be prompted to create a user profile when you first open the software:



Give your user a name, and choose a language and voice. You can also add a picture if you wish.

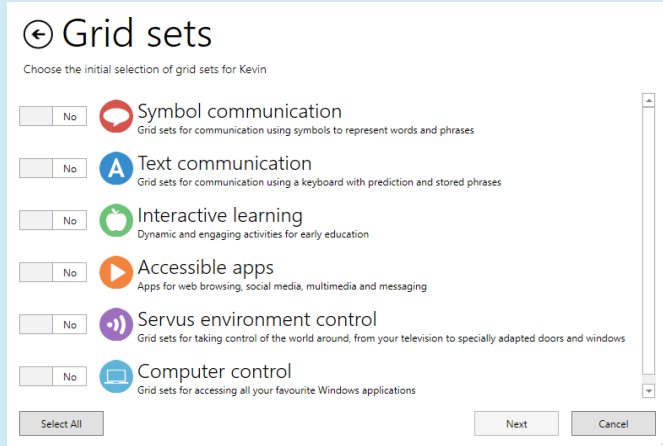
★ Tip

You can use the **Camera** option under **Change Picture** to take a photo with your webcam.



Select the type of grid sets your user will need by selecting from the six options.

You can add or remove grid sets later, so don't worry if you are unsure at this stage.



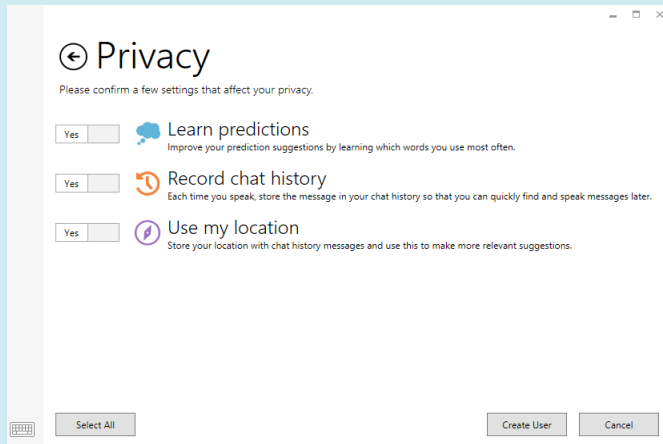
Grid 3 has powerful prediction features to significantly speed up communication.

To take advantage of these features, you will need to confirm your permission for Grid 3 to learn from your words, phrases and location. You can change these settings at any time when using Grid 3.

Click **Create User** to finish.

★ Tip

A user can also temporarily prevent information about their activity being recorded by using the **Private mode** command.

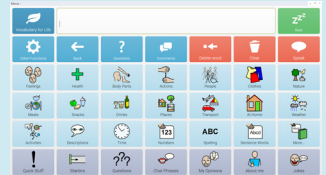


Grid sets

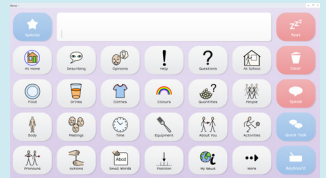
Included with Grid 3 are a whole range of useful grid sets which can be used either straight 'out of the box', or as a starting point for personalisation.

Symbol communication

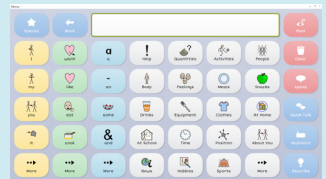
Symbol Talker A is designed for somebody starting off with alternative communication. Words are organised by topic. On each topic grid you can build simple sentences from one or two selections.



Symbol Talker B builds on the language and access skills that have been established and provides vocabulary to build sentences from up to three selections.



Symbol Talker C provides a transition for people that have successfully communicated with a topic based vocabulary and are ready to use more language tools to say more. Core vocabulary is the name given to the words we speak most often. In Symbol Talker C you can access core vocabulary on each topic grid, giving you the power to create a much wider variety of sentences.



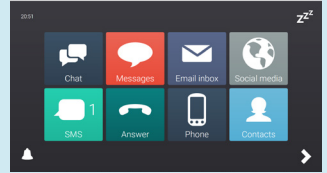
Symbol Talker D promotes core vocabulary on the home page. This means you can generate novel sentences very quickly and you only need to visit topic pages to find less common words. The smart grammar tools in Grid 3 help you generate grammatically correct sentences with fewer selections.



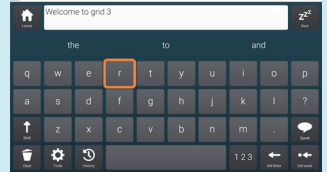
Grid sets

Text communication

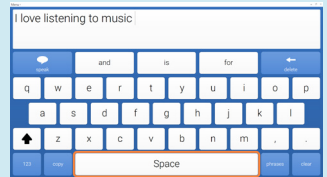
Fast Talker 3 is a communication grid set for literate users. From the home page you can choose whether you want to chat or open one of the accessible apps, including SMS, phone, email, social media, music player and much more.



Fast Talker 3 makes use of Grid 3's powerful prediction and chat history tools to significantly speed up message generation.



Text Talker is a text based communication system for literate users. It includes prediction and a ready-made bank of instant messages.

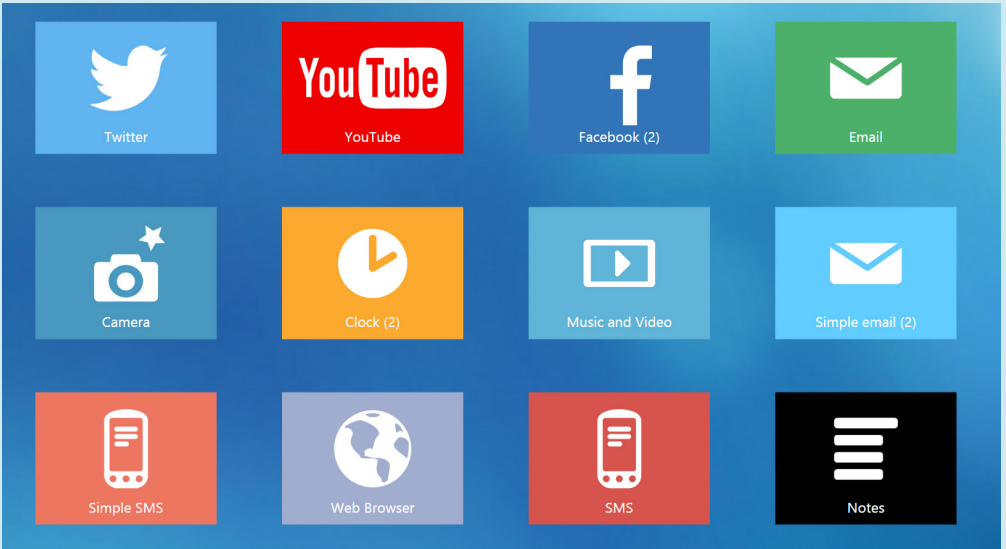


Simple keyboard is a basic qwerty keyboard with symbol prediction for people with emerging literacy.



Grid sets

Accessible apps

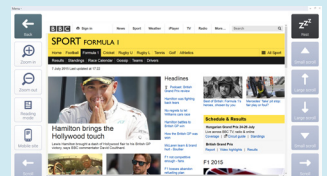


Grid 3 comes packed with ready-made grid sets for music, photography, SMS, web browsing, social media, email, phone, word processing and more!

Social media and the web

Post, share and explore your social media accounts with Twitter and Facebook grid sets. Send your updates and tweets quickly and easily.

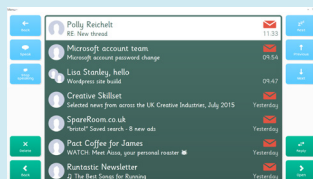
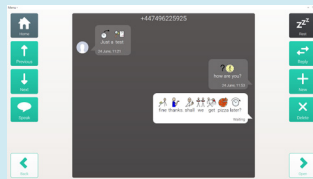
The built in web browser makes accessing websites intuitive and is up to date with the latest web technologies. Cells containing all the links on a website can be automatically generated.



Remote communication

Go mobile with built in smart phone control and SMS messaging. Text messages can even be symbolised to help with recognition and reading speed.

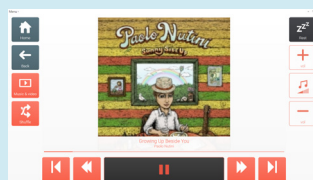
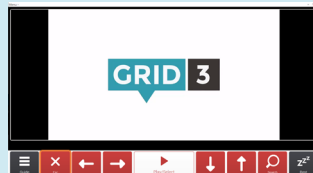
Send and receive your emails to stay in touch with friends and family. It is easy to browse your inbox, compose and send your messages



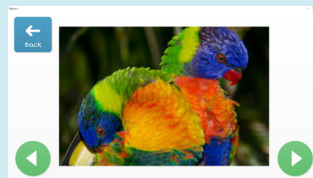
Music, photos and videos

Easily navigate your media with the photo, music and video grid sets.

Easy browsing of your music by album, artist or song let you find the perfect soundtrack. Videos are easy to categorise and watch. The built in Youtube app makes browsing videos simple and easy to control.



The camera and photo album grid sets let you capture and share your best shots with the world.



★ Tip

You can easily add accessible app grids into an existing grid set. In edit mode, click on the **Grid Set** tab and then **Add from another grid set**.

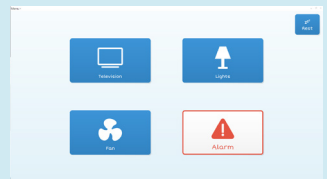
Grid sets

Servus environment control

Grid 3's environment control enables you to control everything from lamps to your front door using your computer. This includes anything you have that is operated by an infrared remote, like your TV, satellite box and music system.



Two grid sets are included – one fully featured, and also a simpler version for those just starting out with controlling their environment.



The clean and simple design of the Servus grid sets makes navigation and making selections easy and intuitive.

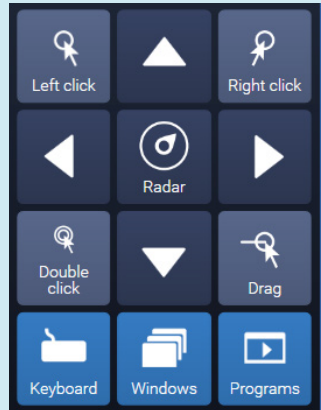


Computer control

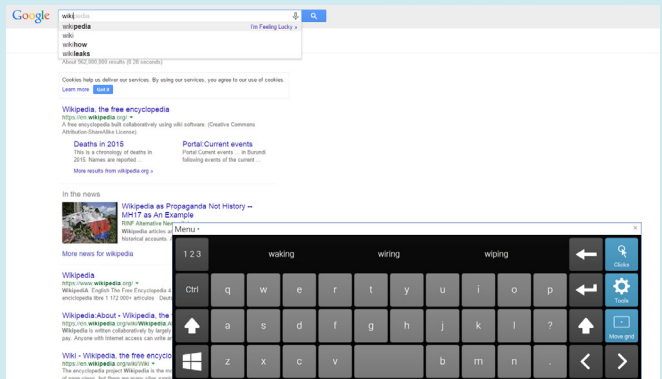
Computer control in Grid 3 puts you in the driving seat, with all of the tools you need to access your computer using eye gaze, pointing devices or switches. There are grid sets to enable you to control every application you need for home, school or work.

Two types of computer control grid sets are available – one for pointer control (optimised for eye gaze or head mouse users), and one for switch control.

Pointer users can choose one of the **click cells** and then look anywhere on the screen to **zoom to click** with pinpoint accuracy. Switch users can make use of a range of commands to enable full control of any software.



The on screen keyboard can be accessed to type in any Windows program including web browsers, Microsoft Office and more.



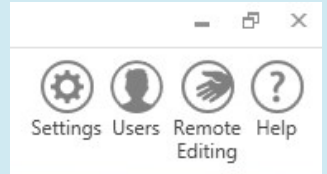
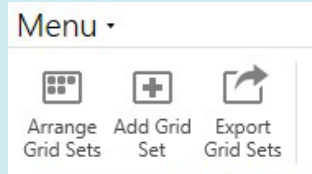
★ Tip

Don't forget to check Online Grids for lots more ready-made resources.

Grid Explorer

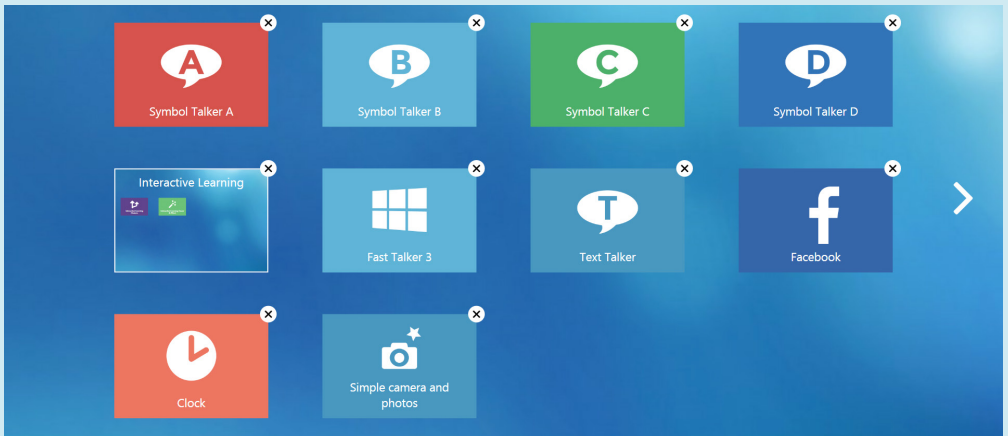
Grid Explorer is your dashboard to manage and load different grid sets. It is fully accessible, using whatever access method has been selected in the settings for this user.

Click on the **Menu** bar at the top of Grid Explorer to see a range of options.



Arranging grid sets

You can rearrange the order in which your grid sets appear by selecting **Arrange Grid Sets** from the menu.

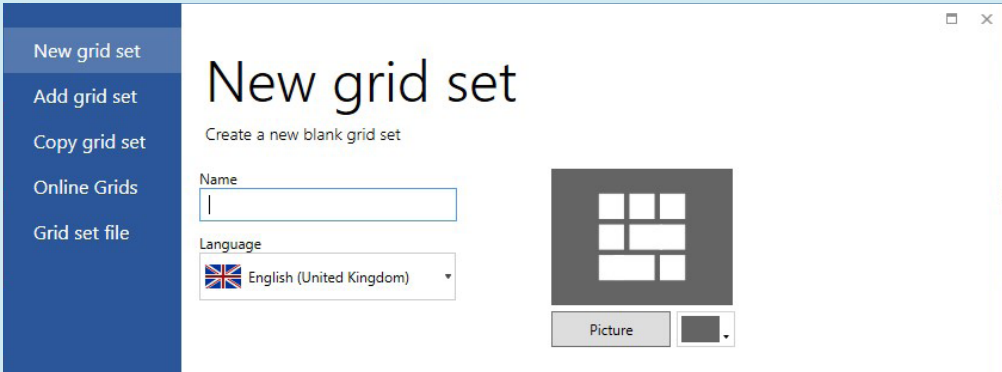


Drag your grid sets round the screen to rearrange them, or create folders to put them in. If you have more than one page of grid sets, you can swipe between them or click the arrows at the edge.

When you have completed organising your grid sets select **Finish Arranging**.

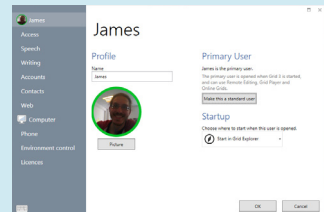
Adding more grid sets

You can quickly add more grid sets to Grid Explorer by selecting **Add Grid Set** from the menu.



Settings

Click on the **Menu** bar, then **Settings**. Here you can explore and make changes to the settings for the current user including access, speech and environment control (See **Lesson 3** training cards for more information).



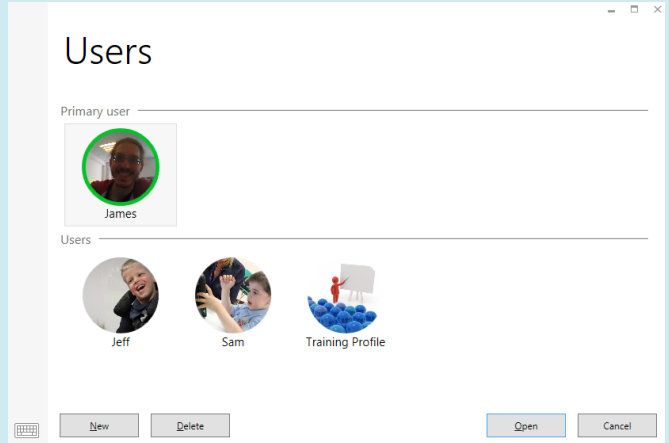
★ Tip

These settings will apply to all the grid sets the current user opens. This means that you will only have to optimise the settings once and then they can be used across as many grid sets as you like.

Grid Explorer

Users

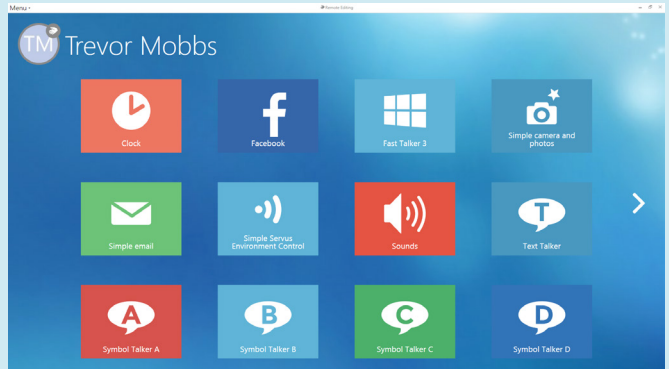
You can switch users and create new users by selecting **Users** from the menu in Grid Explorer.



Remote editing

Remote editing allows another Grid 3 user to access and edit your grid sets online.

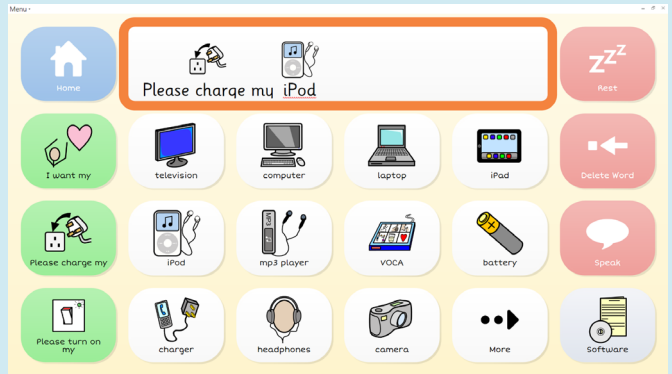
You can sign in to remotely edit another users grids by selecting **Remote Editing** from the menu. See **Lesson 2.8** for more information.



Using a grid set

Using a grid set is easy and intuitive. Every grid set will look slightly different, but we will use this page from Symbol Talker A to show you the basics.

The large cell at the top is the **Writing Area**. This is where a message is composed. Clicking on this cell will either speak the message or move the cursor, depending on your settings.



The green cells are sentence starters. The white cells are Word list cells. Both green and white cells send text to the writing area to compose a message. In this case there is more vocabulary available than can fit on the page – click **More** to access more words.

The red cells are **Command** cells which carry out special functions. The **Rest cell** in the corner will pause input for eye gaze or head mouse users – click it again to resume.

Jump cells are used to navigate to other grids in the grid set. In this case, you can jump to the home grid by clicking **Home**, or to the **Software** grid.

★ Tip

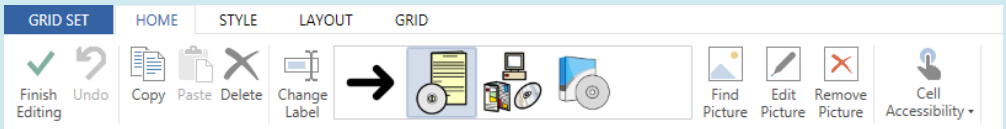
To quickly find which grid a word is on, click on the **Menu bar** and **Find Word**.

Quick edits

It is quick and easy to make a few tweaks to a cell or grid. Here we show you how to make a couple of small changes to a cell, and how to quickly add a word to a grid.

Changing the label or picture

Click on the **Menu bar**, then **Edit** (or press **F11** on the keyboard)
Select the cell you want to edit by clicking on it.

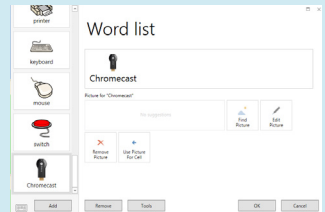


Now you can change the text that appears on the cell by clicking on **Change Label**, or select an alternative picture. Click **Finish Editing** and save changes when you have finished.

For more on editing cells, see **Lessons 1.1** and **1.2**.

Adding to a word list

If your grid set makes use of word lists, you can quickly add a word by clicking on the **Menu bar** and **Word List**. Then click **Add**, type your new word, choose a picture, and click **OK**. For more on **Word Lists**, see **Lesson 2.1**.



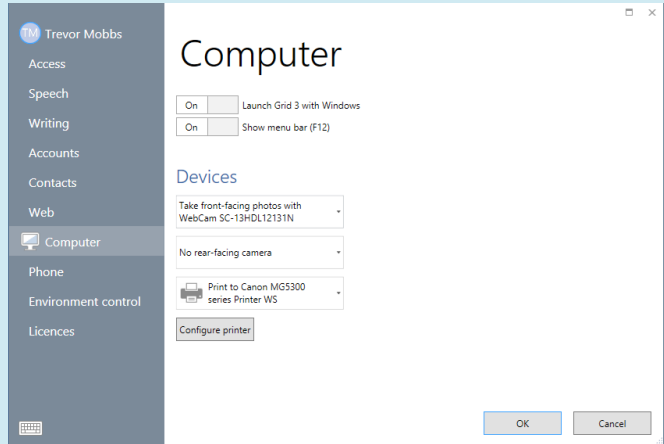
★ Tip

You can bring up an on screen keyboard by clicking on the icon in the bottom left.

Launching on startup

You may want to set Grid 3 to automatically open when you start your computer.

In Settings, click on Computer, then **Launch Grid 3 with Windows**.

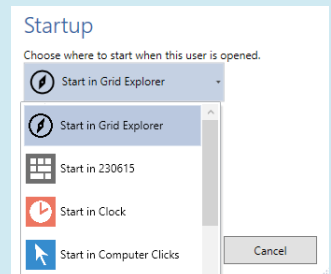


★ Tip

You can also set up Grid 3 to use your camera and printer here.

Setting the startup grid set

To select which grid set is opened when Grid 3 is launched, make sure that the **Primary User** is selected and click on the **Menu bar** at the top of the screen, then **Settings**. Under Startup on the top page, click on the drop down menu and choose from the available grid sets or Grid Explorer.



Continue your Grid 3 journey at
www.thinksmartbox.com

Smartbox